

## TECHNICAL DATA

Body Type	Sandwich
Interface	ISO 05 - X&Y (Euro)
Body Features	Tap in manifold - X and Y
Mounting Hole Diameter	7,1 mm

**NOTES** *Important:* Carefully consider the maximum system pressure. The pressure rating of the manifold is dependent on the manifold material, with the port type/size a secondary consideration. Manifolds constructed of aluminum are not rated for pressures higher than 3000 psi (210 bar), regardless of the port type/size specified.

## PORT DESIGNATORS

Modifiers	Ports
X6D, /S, /V, /Y	Ports X & Y: 1/4" BSPP;

## INCLUDED COMPONENTS

Part	Description	Quantity
500-001-012	O-Ring	2
500-001-014	O-Ring	5

## CONFIGURATION OPTIONS

Model Code Example: X6D

### MODIFIER

6061-T651 Aluminum, Buna-N

/S 65-45-12 Ductile Iron, Buna-N, Blackened

/V 6061-T651 Aluminum, Viton

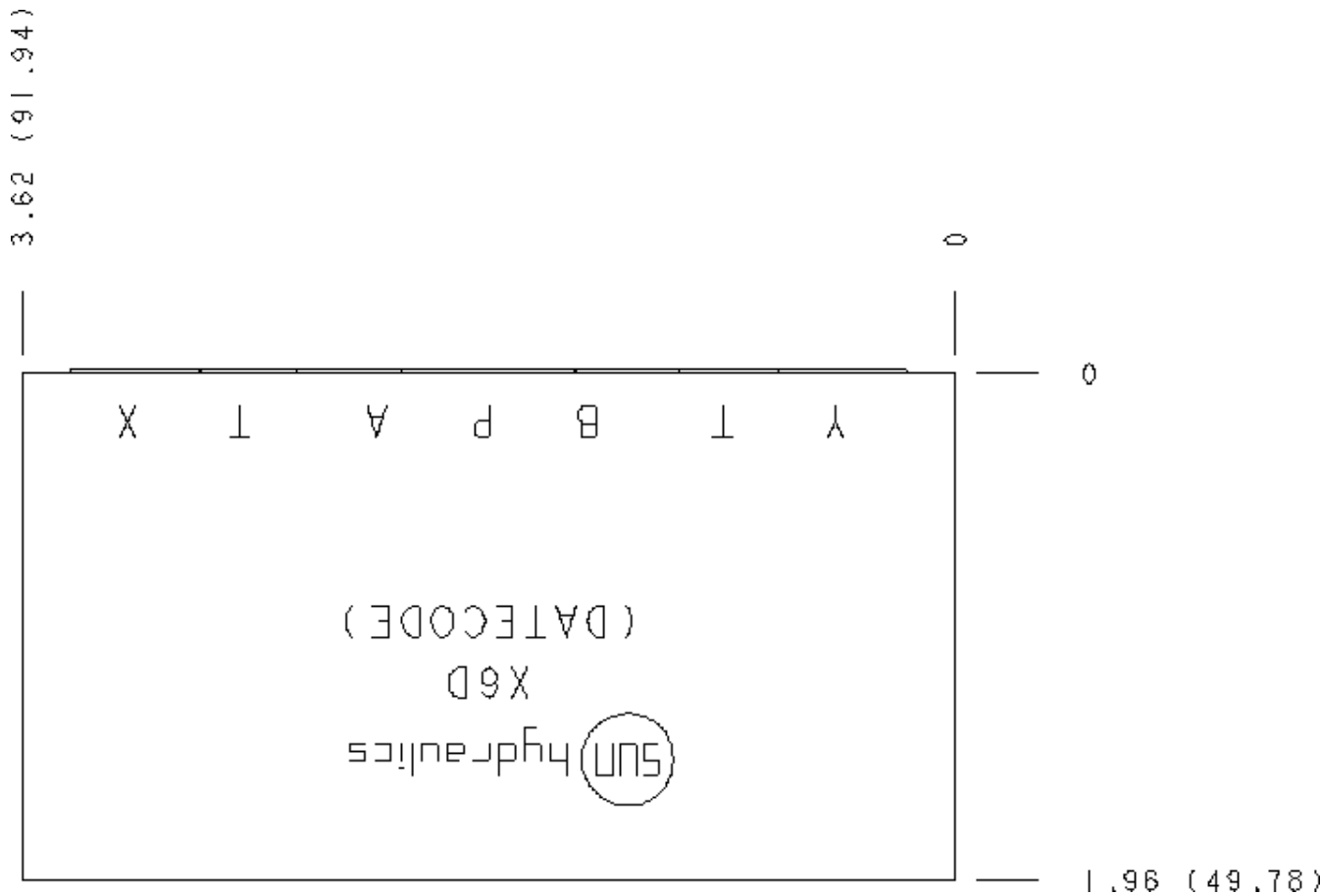
/Y 65-45-12 Ductile Iron, Viton, Blackened

## MANIFOLD FACES

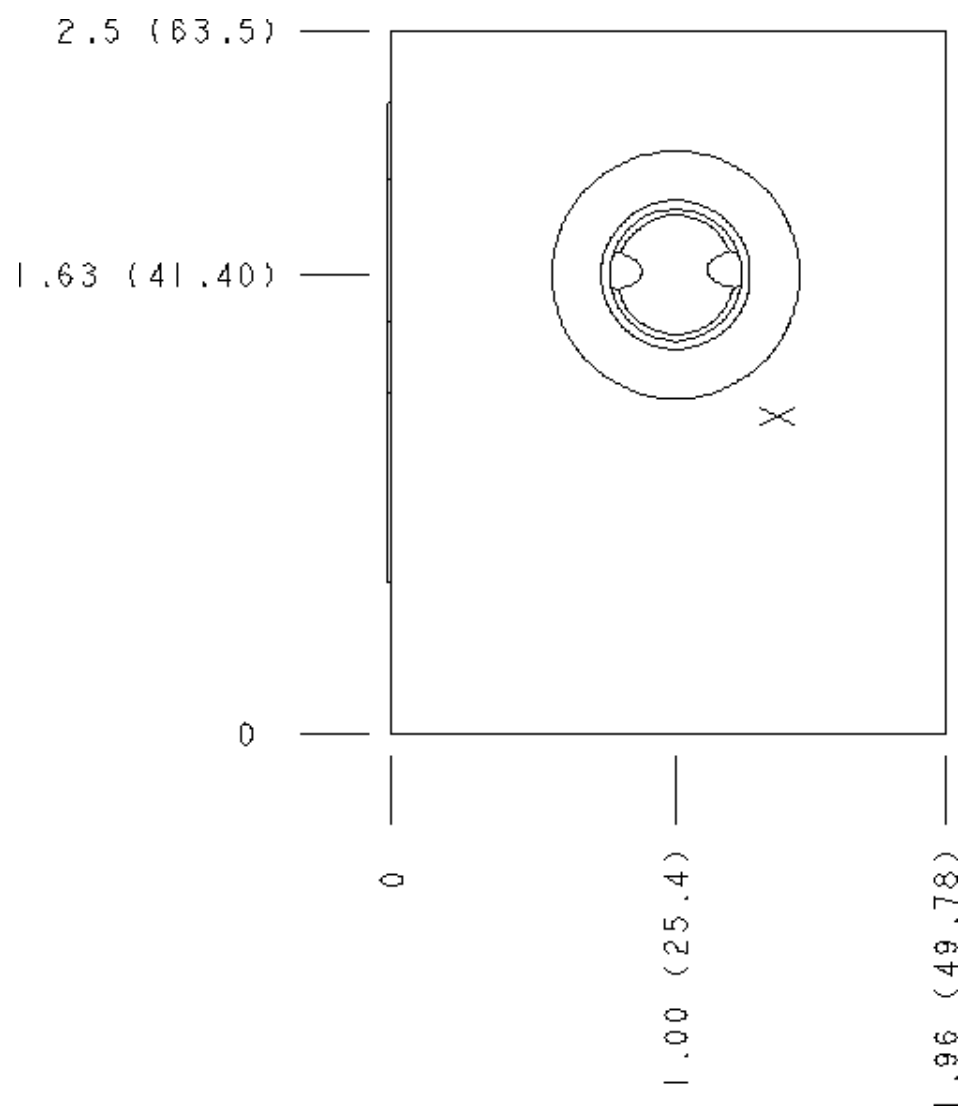
### FACE GRID

1	2	3	4
5	6	7	8
9	10	11	12

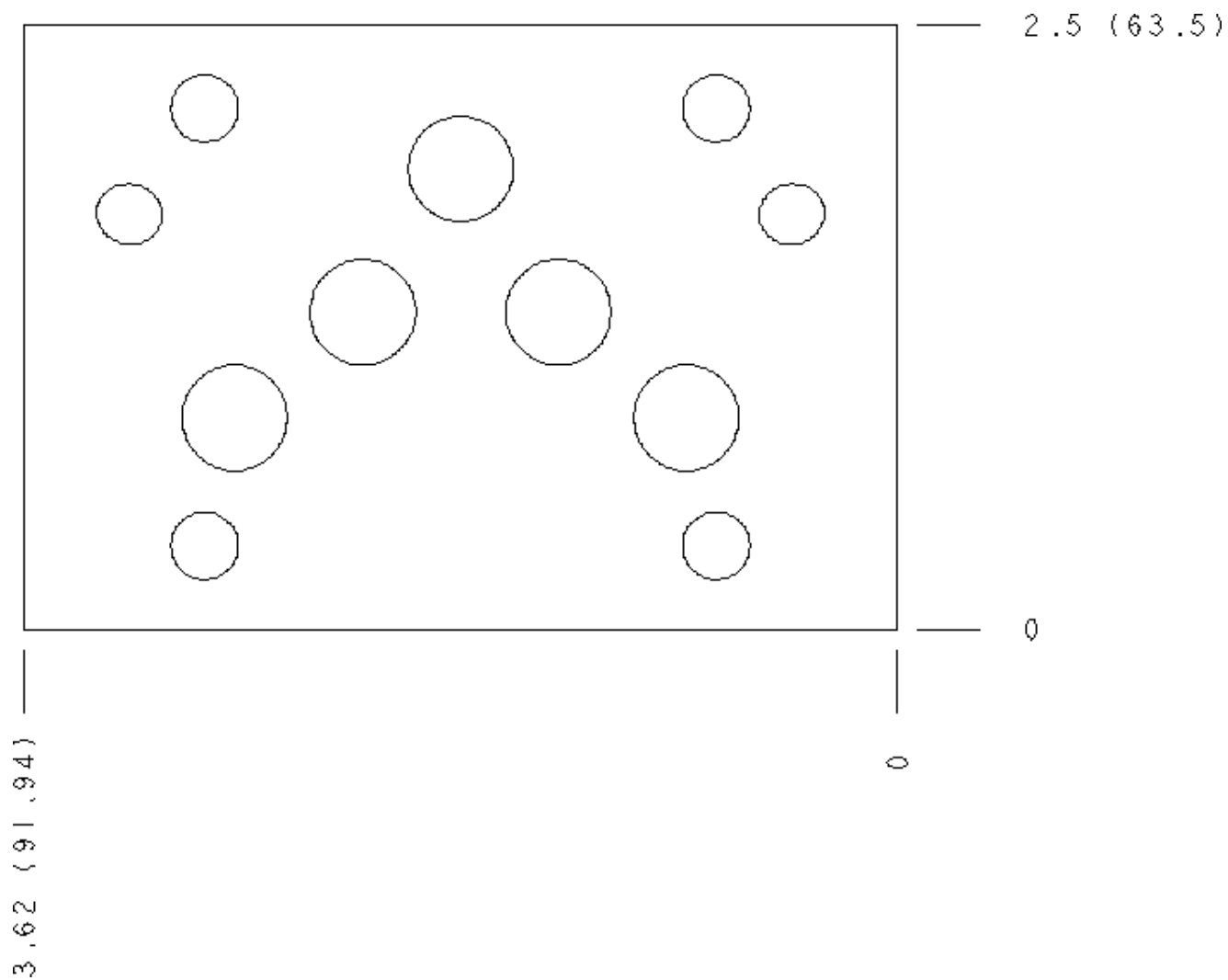
Face 2



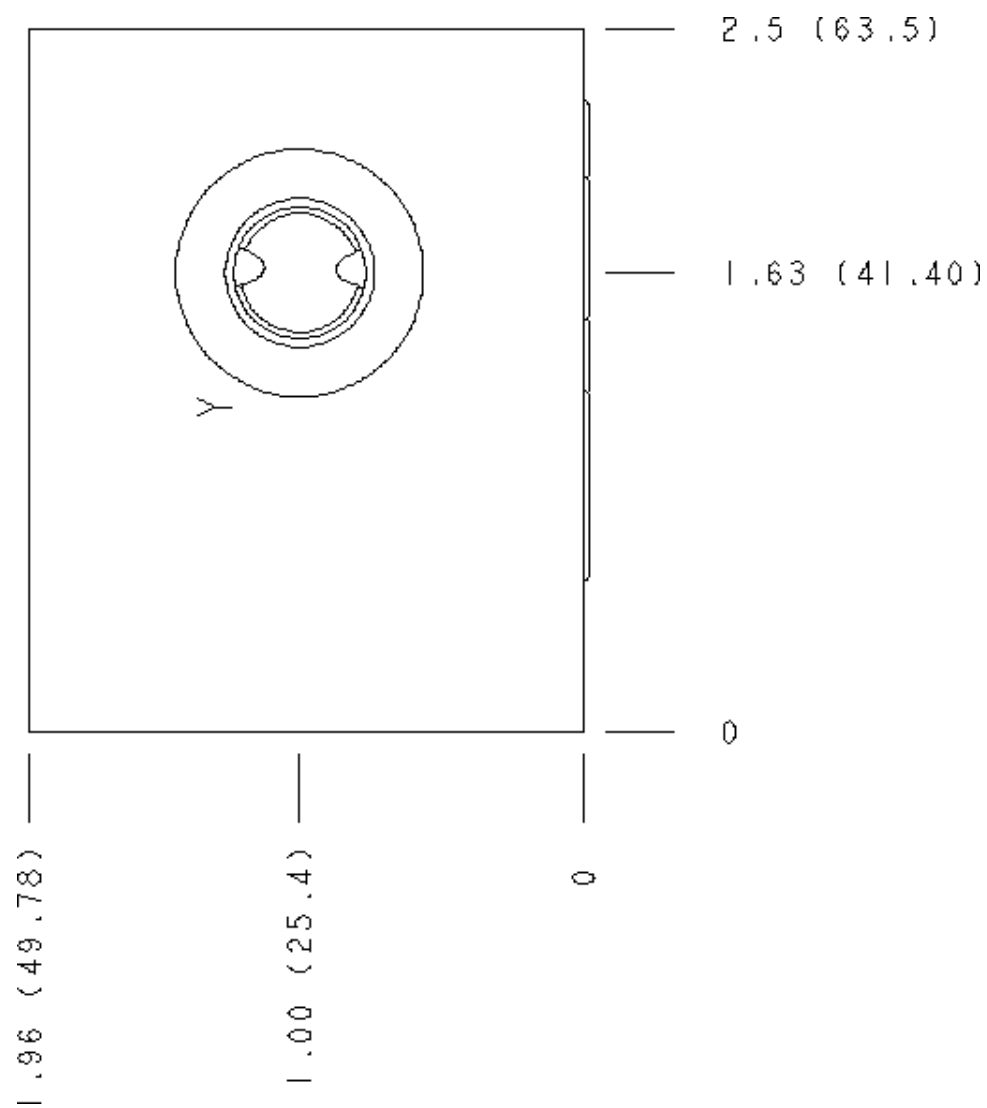
Face 5



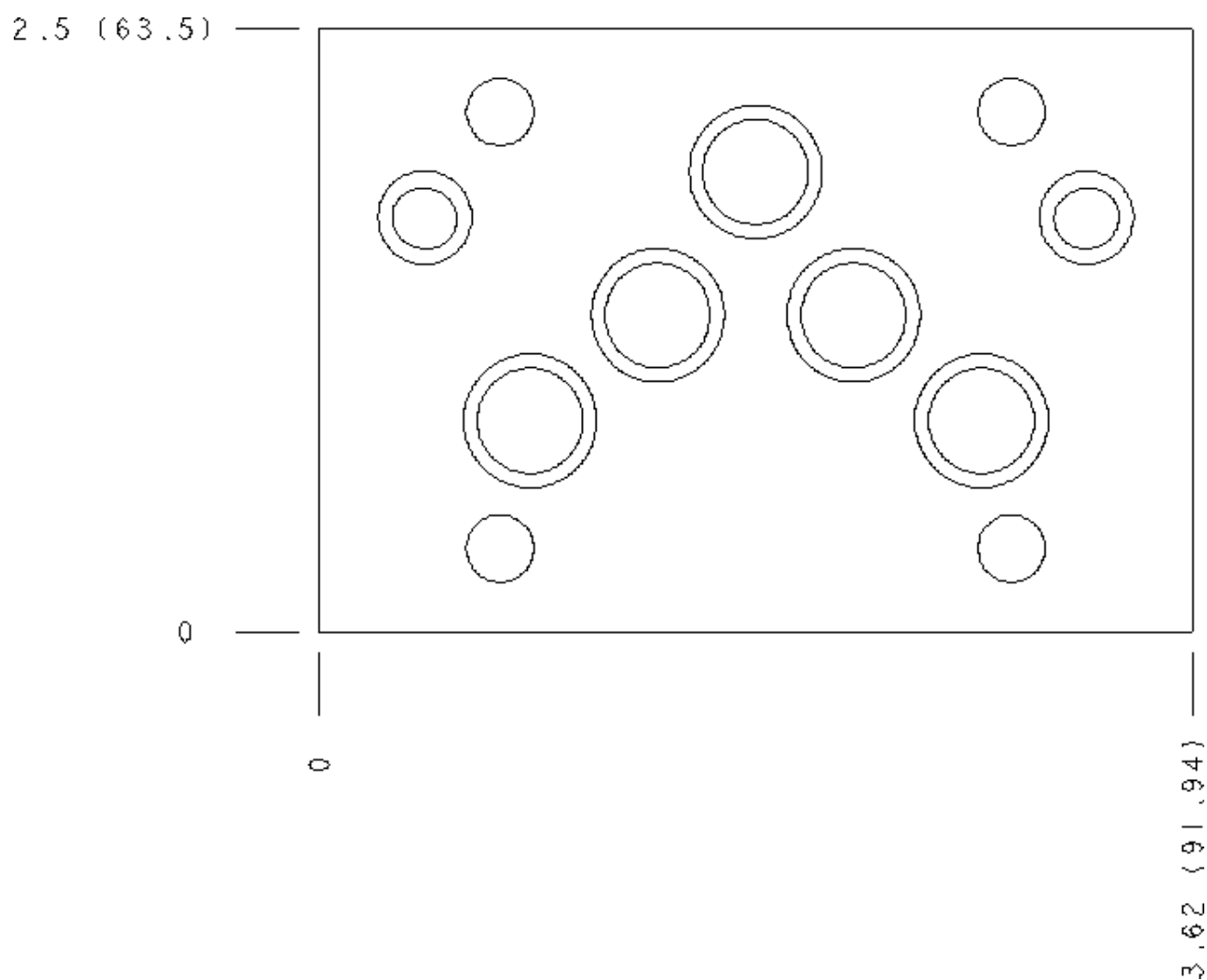
**Face 6**



**Face 7**



**Face 8**



**Face 10**

