

## TECHNICAL DATA

Body Type	Sandwich
Interface	ISO 05 - X&Y
Body Features	Tap in manifold - P and A or P and B
Stack Height	25 mm

## NOTES

**Important:** Carefully consider the maximum system pressure. The pressure rating of the manifold is dependent on the manifold material, with the port type/size a secondary consideration. Manifolds constructed of aluminum are not rated for pressures higher than 3000 psi (210 bar), regardless of the port type/size specified.

## PORT DESIGNATORS

Modifiers	Ports
ZSR	All Ports: 1/4" BSPP;

## CONFIGURATION OPTIONS

### Model Code Example: ZSR

#### MODIFIER

6061-T651 Aluminum, Buna-N

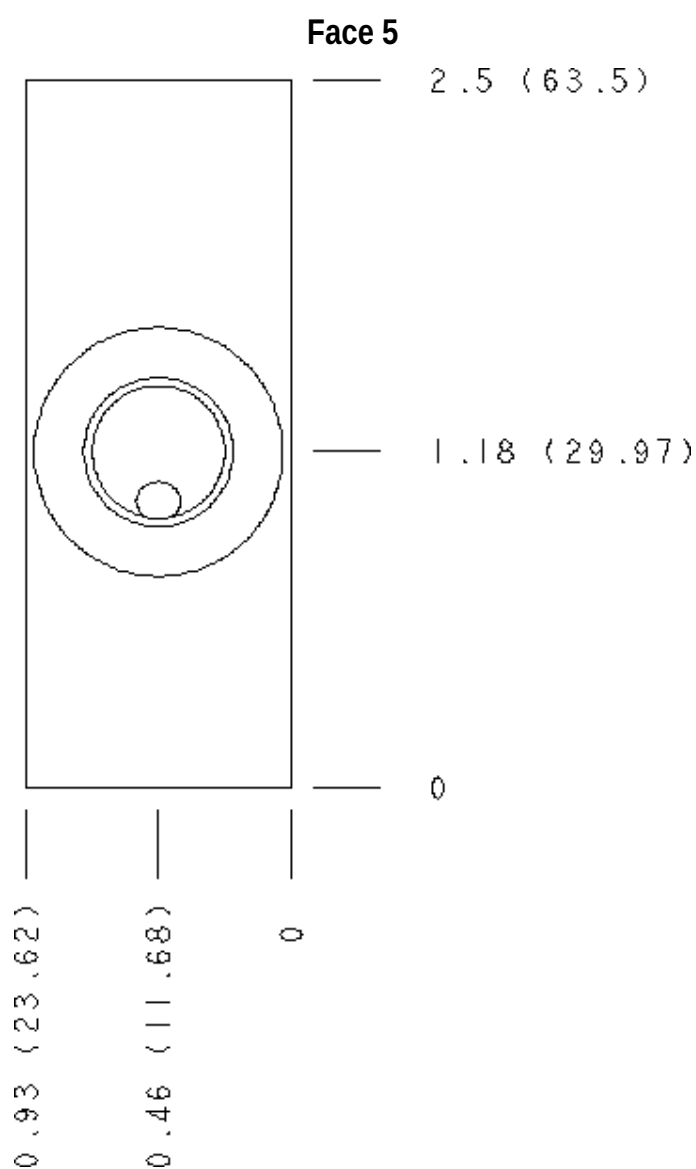
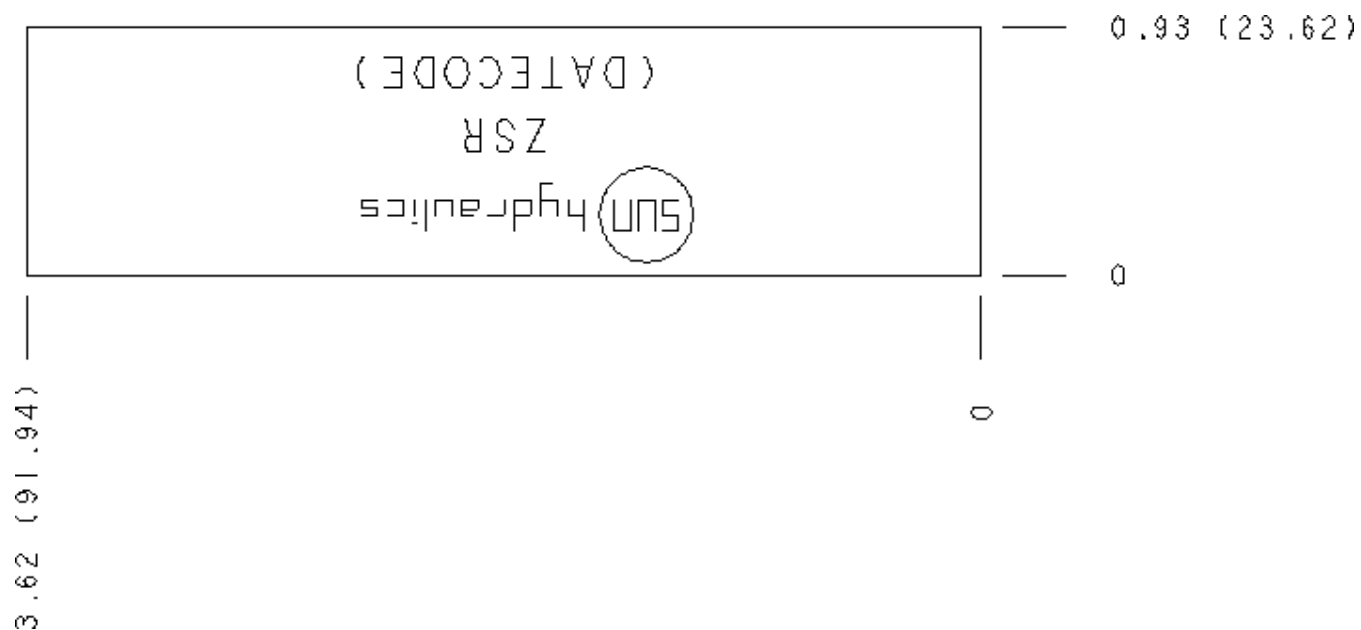
/S 65-45-12 Ductile Iron, Buna-N, Blackened

## MANIFOLD FACES

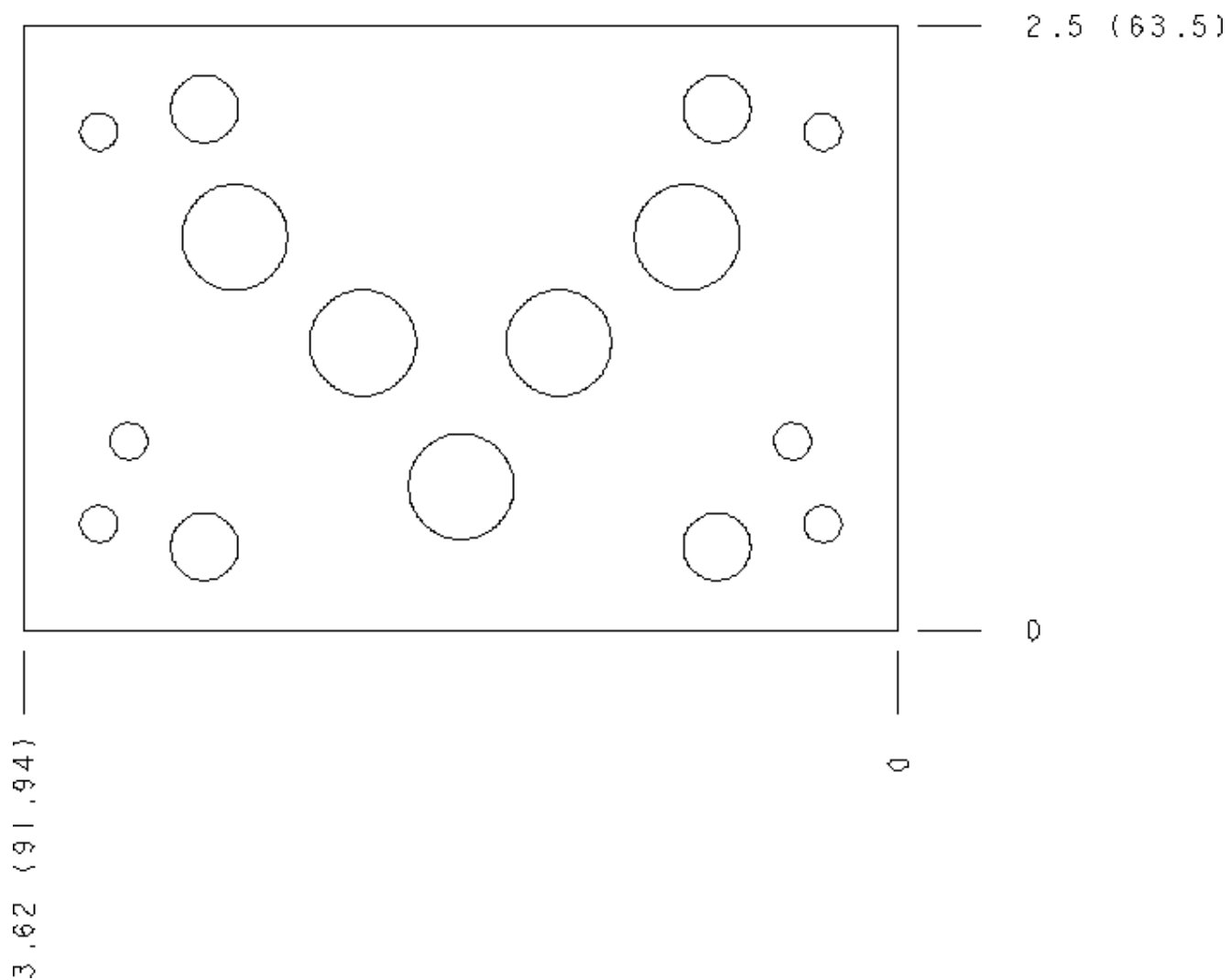
### FACE GRID

1	2	3	4
5	6	7	8
9	10	11	12

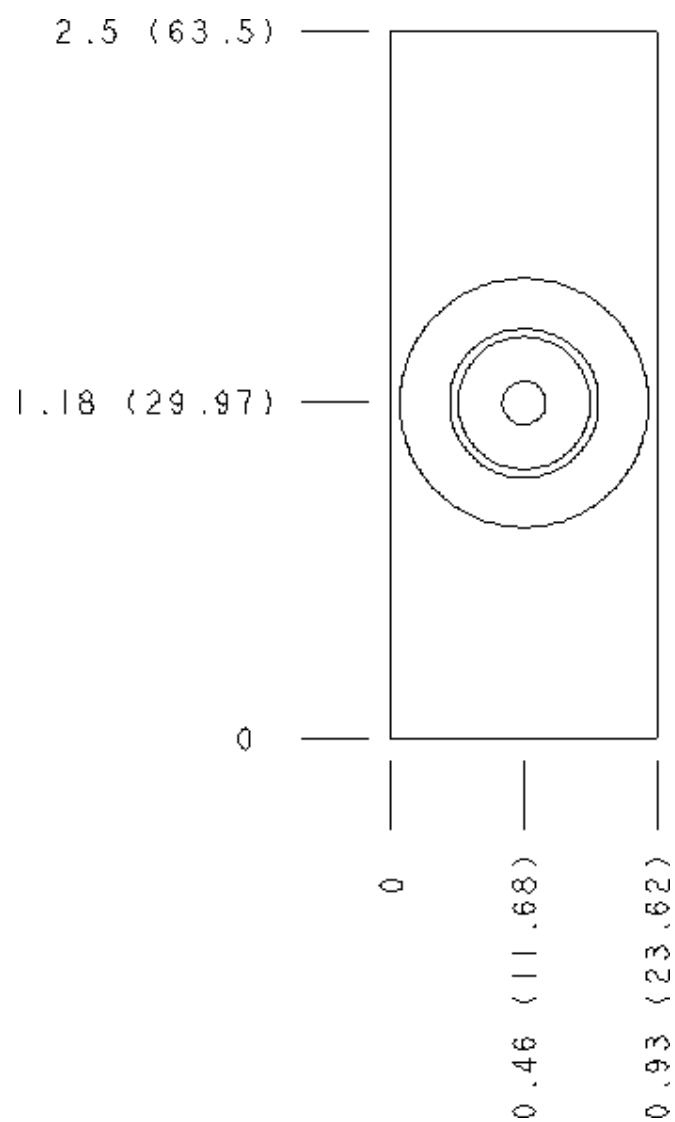
### Face 2



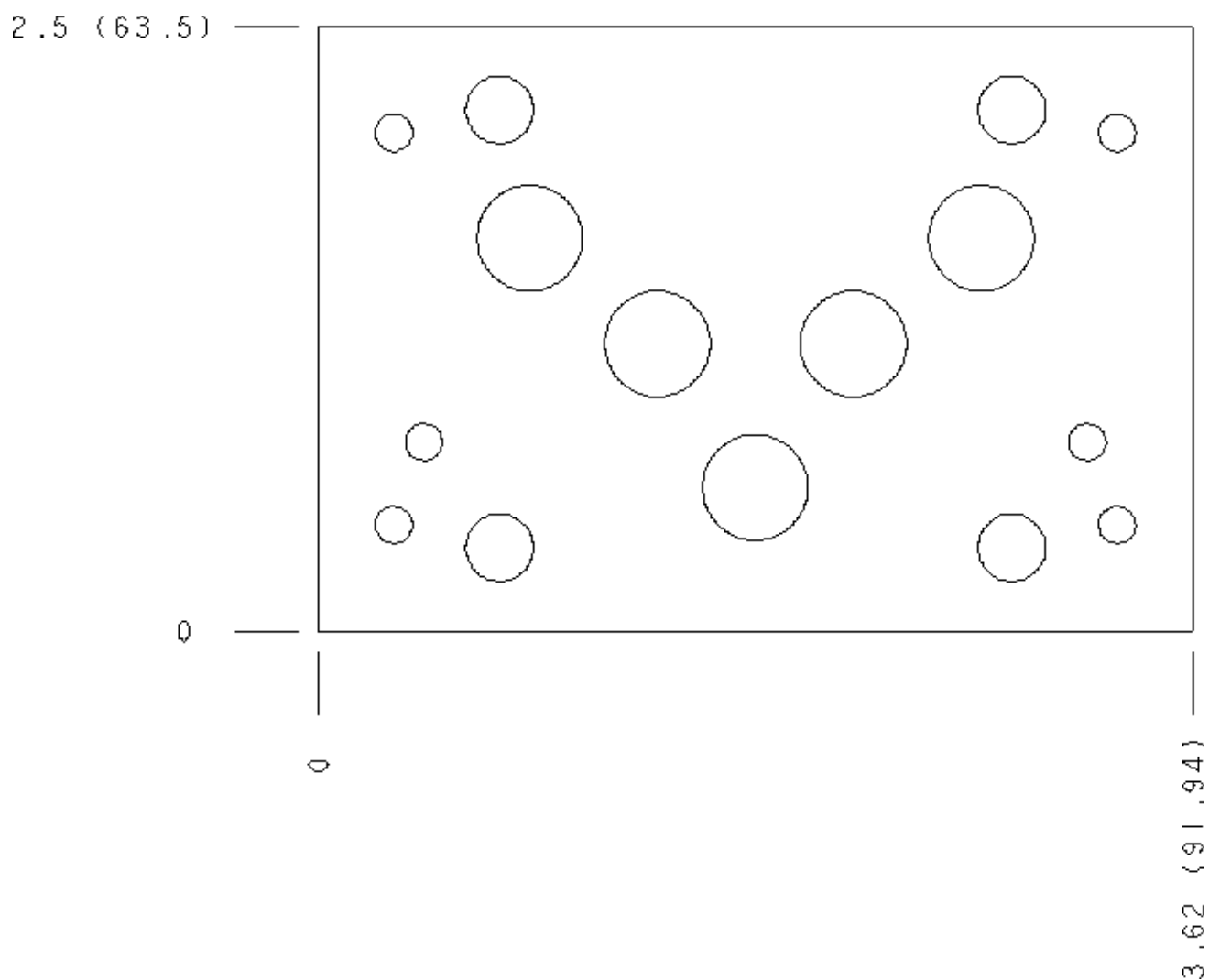
**Face 6**



**Face 7**



**Face 8**



Face 10

